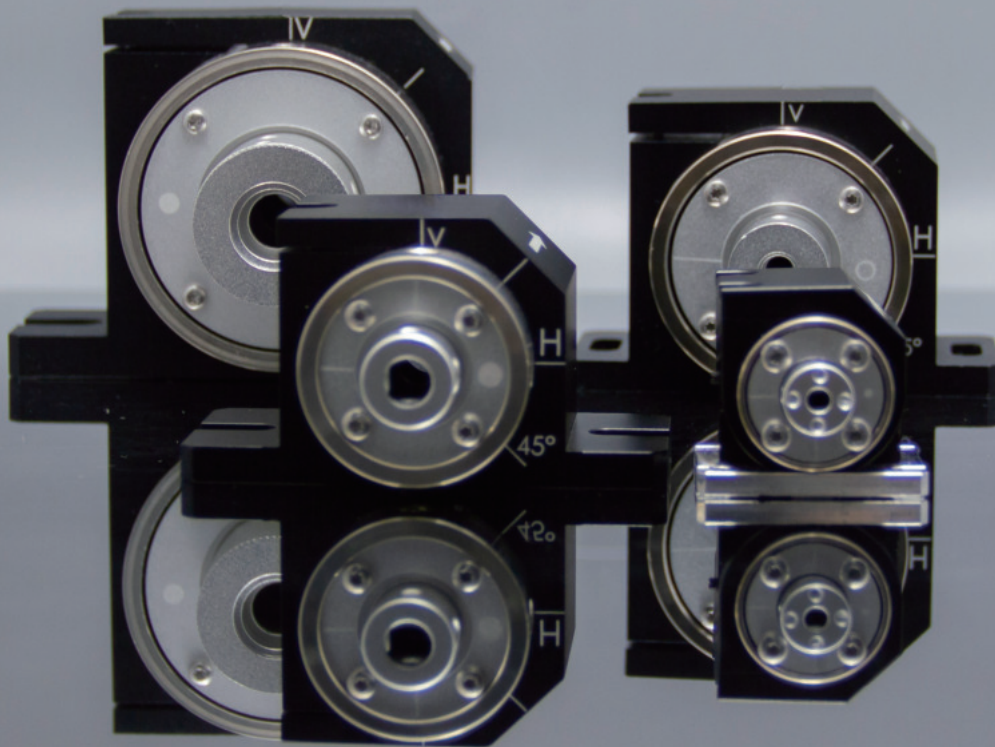


CRYLINK
— LINKING VALUE —



CryLink Isolator & Rotator

Magneto-optical devices for
isolated backward transmission of light



Scan Here

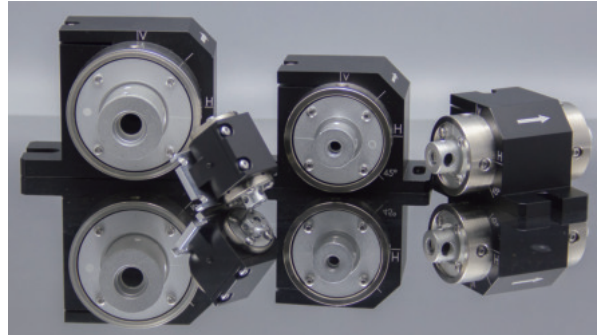


www.crylink.com

CryLink Isolator & Rotator • Superior Quality

Crylink's isolator/rotator has the advantages of high isolation and multi-wavelength selection, which can effectively protect the laser and improve the stability and reliability of the system.

It is widely used in large laser systems and pico-second laser systems in industry, scientific research, medical treatment, beauty and other fields, and is favored by users in various fields.



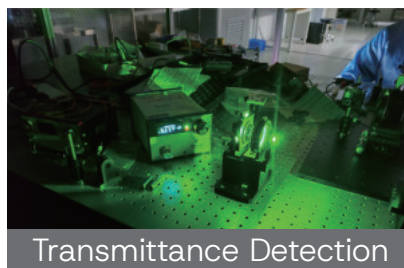
CryLink Isolator & Rotator • Production

Crylink's Isolators / Rotators are manufactured and assembled in ultra-clean rooms to avoid environmental impact on product quality.

Technicians operate under strict 5S management principles, cleaning, debugging and testing each component before assembly. This ensures optimal performance.



CryLink Isolator & Rotator • Detection



Crylink's inspection process includes testing for isolation, transmittance, and finish to ensure

That: **Isolator transmittance $T > 90\%$**

Isolator isolation $I > 30\text{dB}@25^\circ$

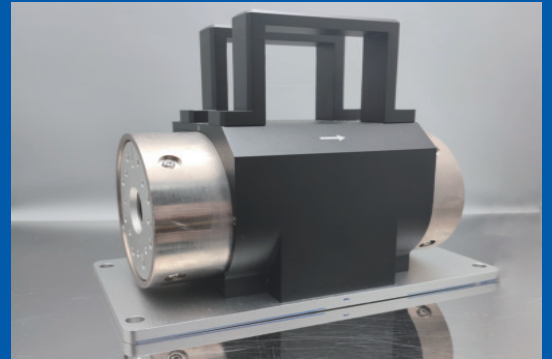
Surface Finish Detection is in accordance with MIL standards to ensure that customer requirements are met.

CryLink Isolator & Rotator · Customized

Crylink's develops and produces standard wave-length isolators/rotators according to the needs of different customers (see list of standard products for details).

We also offer customized services:

**Including special wavelengths from 400–1100nm.
Large diameter customization service (Φ 10mm, 15mm, 20mm, 25mm, etc.)**



CryLink Isolator & Rotator · Standard

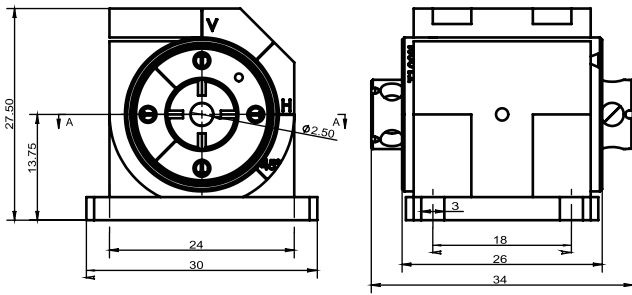
Model	Model Wavelength	Clear Aperture	Extinction Ratio	Damage Threshold@10ns	Package Type
CL-ISO-405-2.5	405nm	2.5mm	>30dB	10J/cm ²	1#
CL-ISO-450-2.5	450nm	2.5mm	>30dB	10J/cm ²	1#
CL-ISO-488-2.5*	488nm	2.5mm	>30dB	10J/cm ²	1#
CL-ISO-488-5*		5mm	>30dB	10J/cm ²	2#
CL-ISO-532-2.5	532nm	2.5mm	>30dB	10J/cm ²	1#
CL-ISO-532-5		5mm	>30dB	10J/cm ²	2#
CL-ISO-633-2.5	633nm	2.5mm	>30dB	10J/cm ²	1#
CL-ISO-633-5		5mm	>30dB	10J/cm ²	2#
CL-ISO-780-2.5	780nm	2.5mm	>30dB	10J/cm ²	1#
CL-ISO-780-5		5mm	>30dB	10J/cm ²	2#
CL-ISO-785-2.5	785nm	2.5mm	>30dB	10J/cm ²	1#
CL-ISO-785-5		5mm	>30dB	10J/cm ²	2#
CL-ISO-793-2.5	793nm	2.5mm	>30dB	10J/cm ²	7#
CL-ISO-850-2.5	850nm	2.5mm	>30dB	10J/cm ²	7#
CL-ISO-1030-2.5	1030nm	2.5mm	>30dB	10J/cm ²	3#
CL-ISO-1030-5		5mm	>30dB	10J/cm ²	3#
CL-ISO-1064-2.5	1064nm	2.5mm	>30dB	10J/cm ²	3#
CL-ISO-1064-5		5mm	>30dB	10J/cm ²	3#

Note: 1. Models marked with an '*' are not available as rotators.

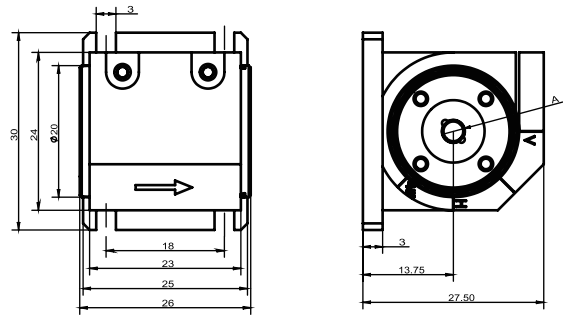
2. For more information, please contact sales at sales@crylink.com



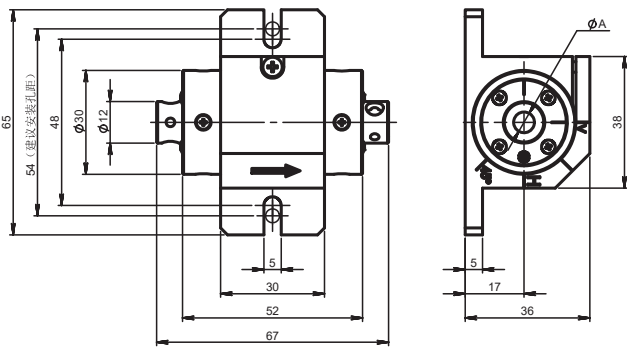
CryLink Isolator & Rotator · Model



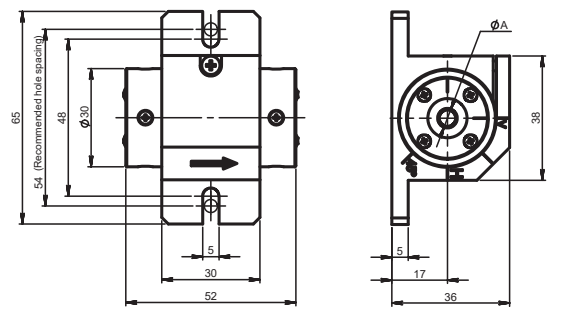
1# Package Isolator



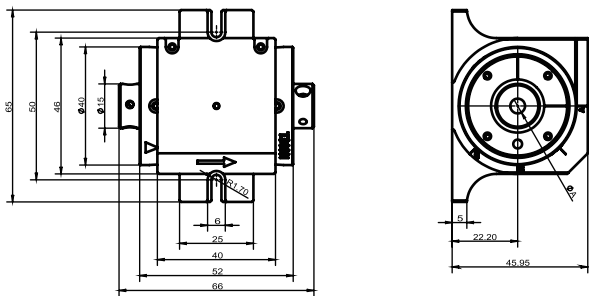
1# Package Rotator



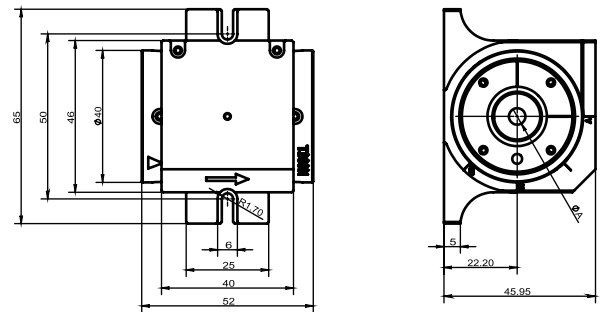
2# Package Isolator



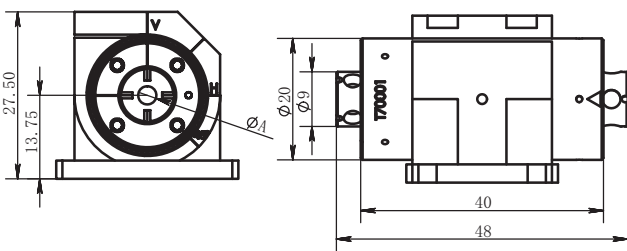
2# Package Rotator



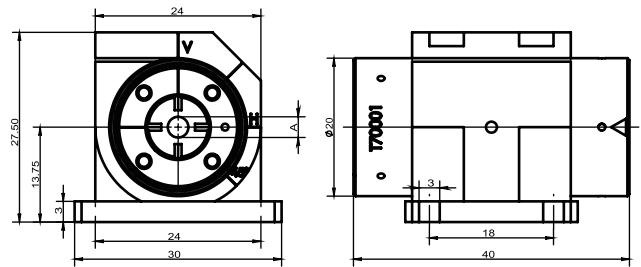
3# Package Isolator



3# Package Rotator



7# Package Isolator



7# Package Rotator

You are welcome to follow us on social media for more inquiries!

Note: All information and specifications in this product book are subject to change without notice. We reserve the right to make improvements and changes in our products and services. All test data is for reference only and actual performance may vary depending on specific applications and conditions of use.

